

INSTRUCTIONS FOR USE

VACUUM PUMP



Rév. 201221

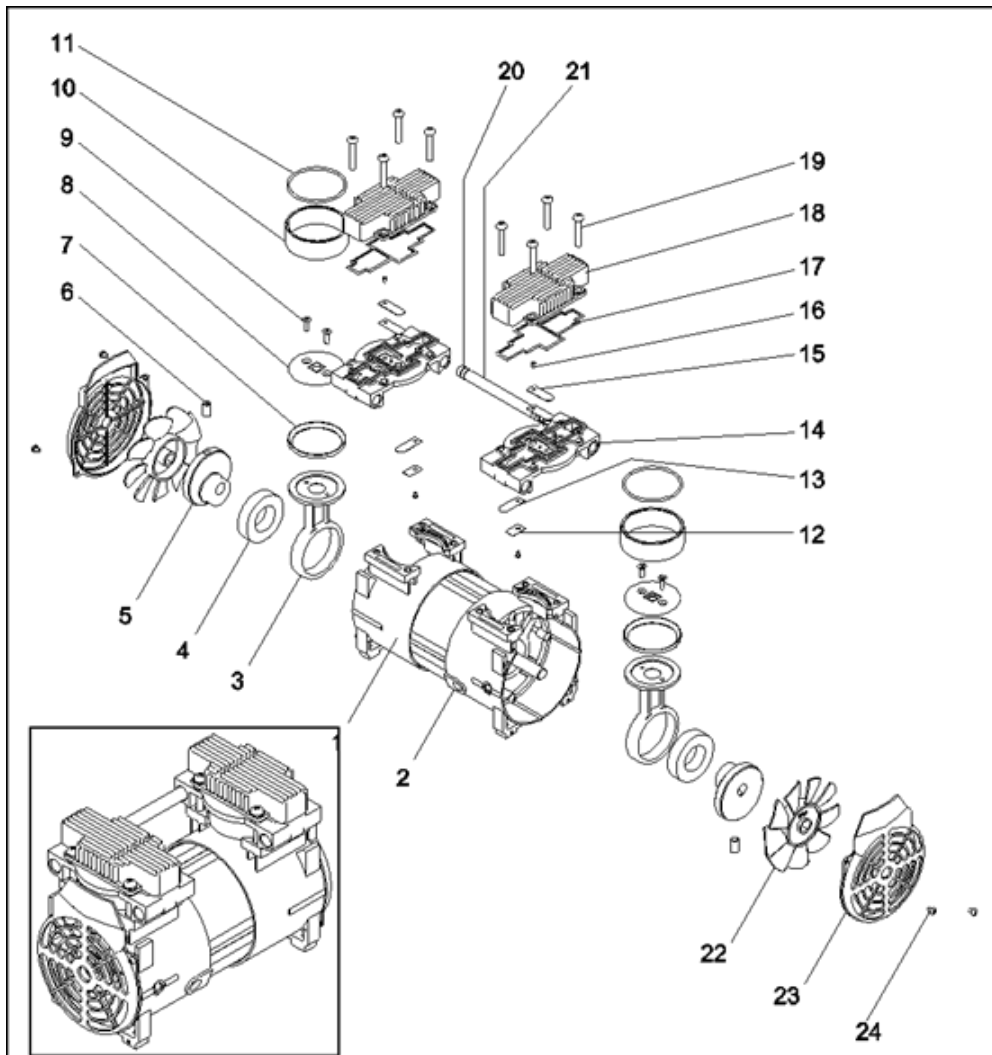
Vacuum pump

- A. SPARE PARTS 2**
- B. INSTRUCTIONS FOR USE 3**
 - 1. SAFETY INSTRUCTIONS 3
 - 1.1. USE 3
 - 1.2. SAFETY INSTRUCTIONS 3
 - 1.3. WASTE DISPOSAL 4
 - 2. EC DECLARATION OF CONFORMITY 4
 - 3. TECHNICAL INFORMATION 4
 - 4. INSTALLATION AND START-UP 5
 - 4.1. UNPACK 5
 - 4.2. INSTALLATION 5
 - 4.3. START-UP 6
 - 5. MAINTENANCE 7
 - 5.1. TROUBLE-SHOOTING 7

Non-contractual images

Translation into English from original in French

A. SPARE PARTS



<i>N°</i>	<i>DESCRIPTION</i>	<i>Quantity</i>	<i>Code UGIN</i>
7	Teflon cup	2	FCE05RAC0044
11	O-ring	2	FCE05RAC0042
12	Valve washer (lower)	2	FCE05MEC0107
13	Valve	4	FCE05MEC0108
17	Rec-Ring silicon	2	FCE05RAC0043

B. INSTRUCTIONS FOR USE

1. SAFETY INSTRUCTIONS

1.1. USE

VACUUM PUMP is a hermetic group without oil bath, with non-return valve. It is recommended to be used with UGIN DENTAIRE ceramic and pressing furnaces. This equipment has to be operated only by dental professionals.

VACUUM PUMP has to be used in the conditions and for the intended use in this manual. Any other use that will be made of it is considered inappropriate. In this case, the manufacturer declines all liability and immediately cancels the equipment warranty.





According to the product's instructions, it is imperative to **read carefully the manual** before furnace installation and operations. Retain the manual for future reference.

1.2. SAFETY INSTRUCTIONS

Pictograms' meaning used in these instructions for use:

	General warning		Electrical hazard		Burn hazard - Hot surface
---	-----------------	---	-------------------	---	---------------------------

Observe following safety instructions:

	<ul style="list-style-type: none"> - The unit has to be connected to an electrical installation in accordance with the applicable standard in the country in which it is being used. This installation has to provide protection against overcurrent, overload and ground faults. - Connect it directly to socket. Do not use multiple sockets. - Ensure that the electric cord is in perfect condition to prevent short circuits. - Before any technical intervention, the unit has to be disconnected from the mains power supply. - Do not spill liquid on the ventilation openings or inside the equipment.
	<ul style="list-style-type: none"> - During operation and after use, the vacuum pump surface may reach high temperatures: do not touch.
	<ul style="list-style-type: none"> - This vacuum pump was designed to pumping non-aggressive gases containing oxygen less than 22%. Use only with UGIN DENTAIRE ceramic and pressing furnaces. - Never use this pump to suck up corrosive liquids or water vapour.
	<ul style="list-style-type: none"> - Use only genuine spare parts. The use of non-original spare parts voids any warranty for your device. - Do not introduce stranger objects inside the unit during the maintenance operations. It is forbidden to modify the material without authorization. - Do not execute different operations of maintenance from those brought back in the manual. Whichever operation not included in this manual, can involve risks. - For whichever information concerning installation, maintenance and use, contact the customer's service UGIN DENTAIRE.

1.3. WASTE DISPOSAL

Observe the waste disposal regulations for electrical and electronic equipment: do not dispose of with household waste.

The unit is subject to Directive 2012/19/EU on waste electrical and electronic equipment and to the laws of the country in which it is being used, and must be disposed of in accordance with applicable regulations.

2. EC DECLARATION OF CONFORMITY

The equipment's EC declaration of conformity is provided as appendix of instructions for use.

Content of the declaration EC:

- Name and address of the manufacturer:
UGIN DENTAIRE
25 rue de la Tuilerie
38170 SEYSSINET-PARISSET – FRANCE
- UGIN DENTAIRE declares, on its own exclusive responsibility, that the product:
 - **Oil-less vacuum pump**
 - Serial number: *see the equipment's EC declaration of conformity*
- Fulfills the essential requirements of health and safety of the following directives:
 - Machinery directive 2006/42/EC
 - Electromagnetic compatibility directive 2004/108/EC

3. TECHNICAL INFORMATION

VACUUM PUMP is a hermetic group without oil bath, with non-return valve. It is recommended to be used with UGIN DENTAIRE ceramic and pressing furnaces. This equipment has to be operated only by professionals and in the conditions described in this manual.

TECHNICAL DATA	
Flow	54 L/min (50Hz) – 63 L/min (60 Hz)
Vacuum limit	745 mmHg - 29,33 inHg – 993.25 mbar
Dimensions (height, width, depth)	210 mm x 155mm x 250mm
Weight	7.6 Kg
Supply voltage	230 V (50/60 Hz)

4. INSTALLATION AND START-UP

4.1. UNPACK

- Unpack **VACUUM PUMP** and check that it is in perfect order.
- Any defects can be reported to the carrier.
- Remember to get the carrier to sign the delivery note.

NOTE: keep the original packaging to transport.

4.2. INSTALLATION

- For correct operation, the pump must be used in a well-ventilated room, without humidity, and with low levels of dust. The room temperature should not exceed 40° C.
- If it is not used, keep it in a room without humidity and protect it from dust and vibrations.
- It is recommended that the device be levelled horizontally.
- Keep around ventilation enough space to ensure good ventilation (at least 150 mm). Do not obstruct the ventilation system for protection against overheating



ATTENTION: do not place the apparatus inside a piece of furniture without circulation of air.

4.3. START-UP

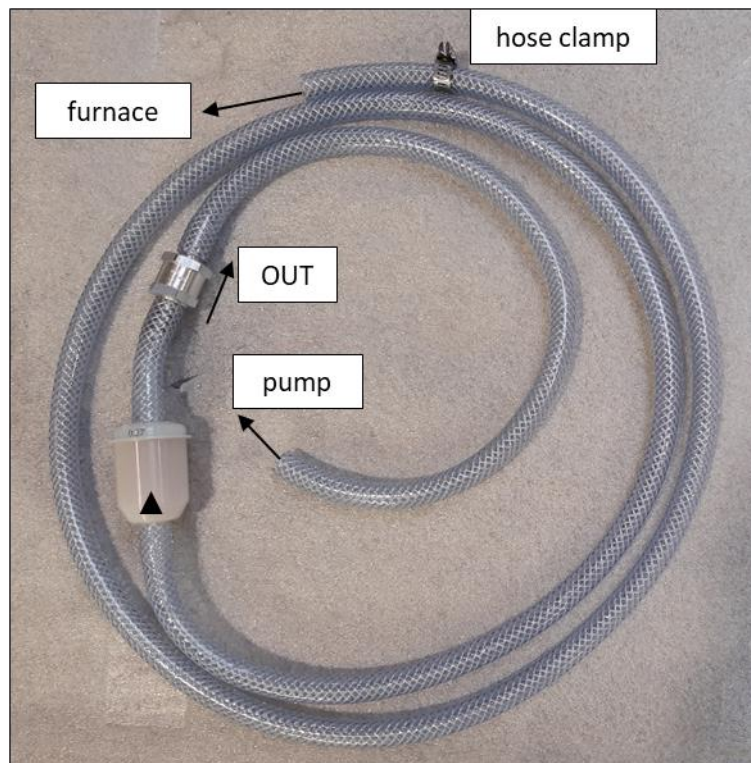
The vacuum pump has standard accessories of one silencer and one set of rubber feet 4 pcs):

- The silencer is for the purpose of lowering noise (upper part of the device)
- the rubber feet are for reducing vibration during operation.

1. Connect the “Tricolair” tube to the ribbed elbow connector.
2. Connect the other end of this tube to the kiln (at rear).

NOTE: respect the direction of connection.

3. Connect the power supply cable to the pump from the kiln socket (at rear).




Flexible connection hose with filter and check valve



WARNING: risk of burns.

Vacuum pump surfaces may reach high temperatures: do not touch. Take steps to prevent people from accidentally touching the hot parts.

5. MAINTENANCE

	<p>Before to carry out the maintenance work and/or cleaning:</p> <ul style="list-style-type: none"> - disconnected from the main power supply (<i>unplug to mains socket</i>), - at room temperature: wait the cooling after use (<i>risk of burns and/or damage</i>).
---	---

Respect the following recommendations to ensure the longevity of the device:

- no need to lubricate,
- never clean the pump with corrosive products or acids.

▪ CLEANING

- **Regularly** :
 - Clean the external surface of the machine in order to remove any dust.
 - Clean the whole ventilation section.
 - Never clean the pump with corrosive products or acids.
- **Annually**: dismantle the silencer and clean it. Change it if necessary.

Note: all maintenance operations must be performed by qualified personnel.

5.1. TROUBLE-SHOOTING

Problem	Cause	Procedure to followed
Motor doesn't start	No power sources.	Check other probable causes.
	Insufficient voltage.	Check the voltage.
	Malfunction of capacitor.	Check capacitor, if necessary, replace it.
	Wrong circuit connection.	Check the electrical connection.
	Motor is out of order.	Contact the after-sale service.
Motor overheated	Piston jammed.	Dismantle the cylinder head and check. If necessary, replace the piston rod.
	Ambient temperature overheats.	Choose a more appropriate location and provide better ventilation.
Insufficient vacuum or pressure	Poor ventilation.	Clean the fan grid and check that the motor fan is not too close to a wall.
	Leak in installation.	Check and block the leaks.
Abnormal noise	Valve flapper broken.	Replace it.
	Valve flapper damaged.	Replace it.
	Not suitable silencer.	Choose suitable silencer and replace it.
	Severe vibration.	Replace cushion rubber feet.

If the failure persists, contact the after-sale service.



UGIN DENTAIRE

25 rue de la Tuilerie • 38170 Seyssinet-Pariset • FRANCE

Tél. : (+33) 4 76 84 45 45 • info@ugin-dentaire.fr • export@ugin-dentaire.fr

ugindentaire.fr  